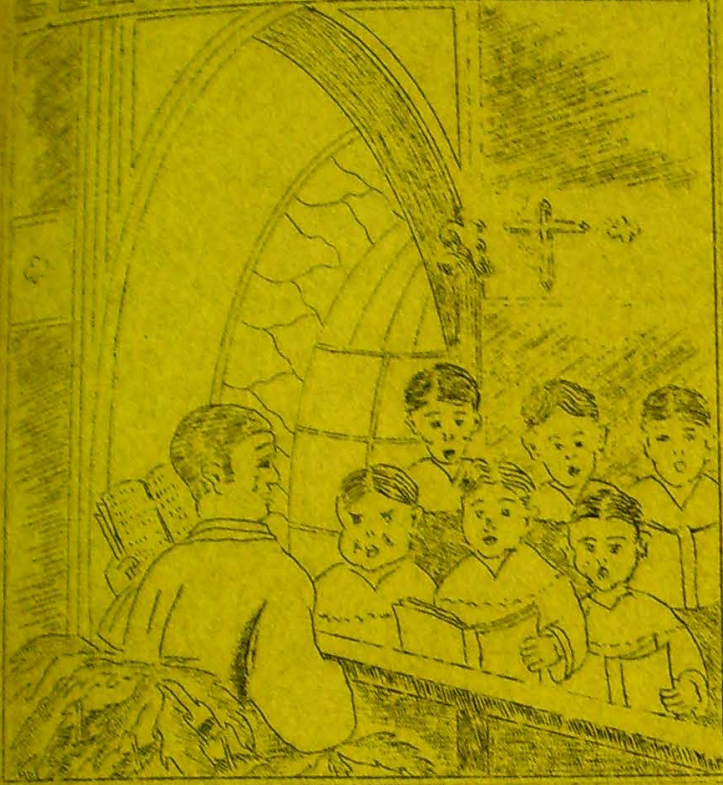


ELECTION WEDNESDAY



POLLS TO BE OPEN
8 TO 6; ALL OVER
16 ALLOWED TO VOTE

▲ ELECTION of representatives from each of the Center's five blocks will be held next Wednesday.

This was learned this week from George H. King, Service Director.

Voting polls will be established in each block and will be opened from 8 a. m. to 6 p. m. Every Center resident over 16 will be allowed to vote. To insure a fair and democratic election, a board will be appointed by the administration to supervise the balloting.

Polling places in the respective blocks will be as follows: A--A2, B--B2; C--C2; D--D2; E--E10. All, save E10, are additions to men's wash rooms.

Names of candidates will be listed on mimeographed ballots. The voter will check five candidates--no more--whom he wishes to represent him on the block council.

List of candidates for blocks A, B, D, and E have already been turned in. C is expected to have their candidates ready by election day.

MEMORIAL DAY

By The Reverend Father Daisuke Kitagawa

▲ MEMORIAL DAY this year comes to us with deeper meaning than every before. Our nation is at war. Unfortunately, we are obliged to take part in the war effort in the most negative way; yet we must not forget that we are here in this Center for the sake of the United States--the nation we love and to which we belong.

Here at Pinedale we look forward to the glorious future of the United States as the Reconstructor of World Order and the Restorer of Human Civilization. We are optimistic about the future of our country, because in

looking backward over the past history of our country we find many a patriot who lived and died for the cause of freedom and justice and brotherhood of man.

Let us, therefore, pledge ourselves to the same cause, following the noble example of those who laid down their lives in the service of our country upon which Providence has committed the task of World Reconstruction.

May the souls of the faithful departed, in the mercy of God, rest in peace.

CLINIC HOURS ANNOUNCED BY HOSPITAL; BABIES MAY HAVE SPECIAL FOOD

▲ DR. HUGO S. O'KONOGI and M. Kanai of the Center's hospital announce new clinic hours for special cases. Diabetic cases will be considered Thursdays; chest clinic Fridays and pre-natal clinic, Tuesdays, all between the hours of 1 to 3 p. m. Clinic hours are from 9-11 on Saturdays.

William Weller, supervi-

sor of Food states that strained baby food will be served in separate dining rooms to children up to two years. Milk for infants on formula may be obtained at Hospital A. Children between seven months and two years will also be served special food received from the hospital providing the food served at the Mess halls is too heavy.

Editor	G. T. Watanabe
Sports Editor	Hideo Hoshido
Associate Editor	Sumo Tsuboi
Features	Ken Harashi
Art Editors	Charles Nakata
Life-Bo Editor	Masao Saito
Cartoonist	Yasumi Sado
Reporters	Tom Nishimura, Miyeko Takatauki, Nob Takasumi, Masao Ogawa
Mimeographers	Tsuyoshi Nakamura

Published Weekly
Distributed Without Charge

THE first serious accident in Pinedale occurred last Saturday evening at the B playfield when George Hayashi, 18, B-20-3, a Tacoma boy, suffered a broken collarbone in a softball game.

He was first taken to the B Hospital where he was given a temporary treatment and Monday was removed to the Fresno Hospital.

He is now convalescing at home.

Pinedale Residence

BY HADY, ESQUIRE

Wandering into our new homes, with mouths agape,
Expecting to feel a long arm on our nape.
Sure were very surprised to find it fine.
Nice and comfy, ah, paradise divine.

Tens of barracks facing each other;
Pleanty of space, so we won't smother.
Mess-halls, latrines, and washrooms,
And laundries for Blue Mondays' glooms.

Complete to small town facilities,
And jobs to fit your abilities.
Five thousand people to house,
Yet enough room for a mouse.

And adequate meals for each person.
Hospitals to prevent ills from worsen.
And playgrounds for the little kids,
And plenty of parking space for our lids.

Five blocks arranged in lenience.
Canteen and post-office for convenience.
And all the denizens so congenial,
Seems like a dream, but it's real.

The Center's government personnel
Are helpful friendly and swell.
and nothing's dealt in truculence,
So let's build our Pinedale Residence.

INDUCTEES URGED TO REPORT NEW ADDRESS

NEW inductees at Pinedale are reminded to notify their draft board and former home post office of their change of address.

Issued are urged to report their new address to the Department of Justice in Washington D.C. Alien Registration address record cards may be obtained at the Post Office, Barrack B-31.

Tray Service

NO service will be given to anyone in the kitchen for special food tray service or sterilizing milk bottles, without a written order from the Center doctor.

AMBITIOUS KENT LAD FIRST CENTER FARMER

THE first vegetables grown in Pinedale Reception Center will not result from the aspirations of some enterprising seed company, or from the culinary staff of the mess department, or from the homesick longings for the fruits of the soil of some issei, but from one 14 year-old Katsumi "Kats" Michihara, formerly of Kent.



gave up and has set his mind in passing out his first products to those skeptical of his success and possibly the kitchen staff.

But as Fate would have it, the radish garden will have to go without Kats for sometime, and he without them, for a case of rumps has him abed in the hospital. However, his faithful friends have assured our farmer that Ol' Sol will not get the better of his vegetation.

"Kats", according to his Kent friends, is an ambitious lad, and within ten days there should crop from his front yard at Barrack D-8 Apt. 4, a goodly supply of radishes (one row), which he has care-

fully roped off and diligently tendered and watered since their plantation May 14, four days after Kat's plantation into Pinedale.

His mother, Mrs. S. Hori, states that people have tried to discourage his production efforts, but Kats has refused to

In the meantime, Pinedale watches with hungry eye, the initial efforts of the first pioneer truck gardener of the community.

May 30, 1942

Saw-dust

G. T. WATANABE

NO JOKING MATTER

THE sort of life we will lead here at the Center depends entirely upon us--the people gathered here from the various communities of the Pacific Coast. Our life here can either be orderly and pleasant, or it can be just plain hell. We--and no one else--can determine what it shall be. We said all this last week, but we think the thought bears repeating, in view of the fact that the election of black representatives has been set for Wednesday.

Pinedale is now a fast-growing community of 5,000. Numerous problems are rising up, which must be ironed out if we are to have peace and order. These problems can be solved only by an intelligent and democratic governing body. It is pertinent that we elect able and qualified leaders on Wednesday.

MAÑANA

THE first issue of the *LOGGER* was the hardest baby for which the staff ever labored. But it was born--finally--about four days after its expected birth date, after much tearing of hair and much pacing up and down in back of the info office.



We had expected to bring out the initial issue last Saturday, but with everything around Boomtown Pinedale in a state of high confusion--a condition inevitable the first few weeks--the Saturday issue came out Tuesday afternoon. A phase of journalism possible only in a town like Pinedale.

'Mañana' in Spanish means tomorrow. To the easy-going Mexican, 'ma-

ñana' may mean next week, next month or even next year. 'Mañana' as used around Pinedale has a similar Mexican connotation. The canteen was going to open 'mañana'; the paper was going to come out 'mañana'--in both cases, 'mañana' was about four days late in arriving. Which all makes Pinedale time as exorciating as Japan time.

But now the *LOGGER* is a lusty, wailing infant, officially out on black and white and the staff will endeavor to print all pertinent Center news and have it out on schedule.



WE have been hearing many compliments being paid to the first issue of the *LOGGER*, for which the staff is highly appreciative. Much credit should go to our hard-working art department--TOM NISHIMURA, CHARLES NAKATA and MASAMI SADO. Tom's work on the map was superlative. Tom is from Sunnysdale, Washington; Chuck is a Tacoma boy who attended the Art Center school in L.A. for two years; and Mas is an accomplished hand at sketching, wood-carving and painting.

TALENT WANTED FOR CENTER AMATEUR SHOW

PINEDALE'S first outdoor amateur program will be held next Saturday evening.

Talented individuals interested in participating in amateur programs, are asked to report at Assembly Hall, E-9, Monday from 9 to 12 a.m. and 3 to 6 p.m.

If the time is not convenient, they may contact any of the following: Mrs. T. Yoshimura, Frank K. Watanabe, Carol Hamakami, Yoshiko Nakatsu or Shizue Tamaki.

PIANO BOUGHT THRU VOLUNTARY DONATIONS

THROUGH a fund raised by voluntary contributions, Pinedale's first piano arrived here Thursday.

A need for pianos was immediately realized when the Church and recreational groups began to organize. Without hesitation, community members pooled their resources and purchased the first piano.

A second piano has already been ordered through the kindness of Carl Bengston, new recreational supervisor.

A movement is now in progress to raise \$100 for a public address system. The P. A. system will be made by Harry Morioka, formerly The Dalles radio shop proprietor.

Donations are also being pledged from various groups in the Center to create a small 'sinking fund' for future equipment.

Radios off At 10

RADIOS and other musical instruments must be turned off at 10 p.m. This order is issued through the office of the Center Manager.

CHURCH

TO take care of the religious needs of Pinedale, the ministerial group, consisting of the Reverend Father Kitagawa and the Reverends Niwa and Inouye, have outlined the following program for this coming week.

SUNDAY SERVICES

- 8:00 Holy Communion (All adult baptized Christians)
 - Special Memorial Day prayers will be offered at the altar.
 - 8:45 Sunday School
 - 9:30 Young People's Service
 - 10:30 Issel Service
 - 2:00 Issel Mission Meeting
 - 8:00 Vesper Service (Young People); Tacoma Young People; Waichi Oyana-gi, Chairman
- WEDNESDAY
- 7:30 p.m. Sunday School Teachers' Meeting
 - 8:30 p.m. "School of Life" Young Peoples' Discussion

SOFTBALL MANAGERS TO MEET MONDAY

An important meeting of all softball managers and representatives will be held this coming Monday, June 1, at the Assembly Hall, E-9, from 8:30 p.m. Jimmy Matsuoka, softball director, stated that this meeting will be the final chance for teams to sign up.

Pre-Season Games:

WHITE RIVER A.C. TURNS TACOMA IN SOFTBALL

CHUCK Matsuoka's homer in the first inning and a double in the fourth cleared the bases on both occasions to give White River A.C. a 15 to 9 win over Tacoma in one of the pre-season softball tilts last week.

Rhy Ikerami, Valley back stop, led the victors with 2 singles and a double in 3 times at bat. Tak Matsui of Tacoma collected a single and a homer.

Tacoma	2	2	2	0	5	---	9
W.R.	4	4	1	4	2	--	15

Hayashi and Toki; Hasegawa and Ikerami.

W.R. OLDTIMERS DOWN BELLEVUE

WHITE River Oldtimers pushed over 5 tallies in the first inning to coast the rest of the way to a 9 to 5 win over Bellevue Supers early this week.

With the score reading 8 to 0, Bellevue came back in the fourth to tally two on singles by Matsuoka and Aramaki. Bellevue's rally in the eighth was out off after a couple of runs crossed the home plate.

Bellevue	0	0	0	2	1	0	0	2-5
W.R. Olds	5	0	3	0	1	0	0	x-9

Namura and Matsuzawa; Doi and Nakanishi.

HOMERS FEATURE VASHON-TACOMA TILT

VASHON ten walked all over Tacoma Tigers by scoring 7 runs in the fourth inning to turn a closely-fought encounter into a runaway game. The score stood 20 to 5 at the end of the seventh inning.

DIRECTORS PLAN LEAGUE OPENERS NEXT WEEK

With over 30 teams already signed up, Center's Twilight League will start its loop play sometime next week, according to James Matsuoka, director.

At the present time 10 teams are listed in the AA circuit, namely: Tacoma Crusaders, Vashon Pirates, White River MAC, Auburn Trojans, Hood River, Auburn AC, Bussel Wolves, White River AC, Bellevue and Sacramento.

Class Aye teams include the following: E-1 Mess, Hood River, Playboys, Lincoln Railsplitters, Auburn Jrs., Tacoma Truckers, Bellevue Super-varsity and Pinedale Loafers.

Finding a need for some sort of financial backing to carry on the league, an entrance fee of \$2.50 will be assessed each team, which must be paid before the first scheduled game. This fee will be used to buy balls, bats and trophies.

A meeting of team managers will be held this Monday, June 1, at the Assembly Hall E-9 from 8:30 p.m. to draw up the season schedule. Matsuoka stated that it will be very important for each team representative to be present.

Auri Takasuga of Vashon and Salem Yagawa of Tacoma led the batters with two homers apiece, while Mas Kurugi and Togami also hit circuit blows.

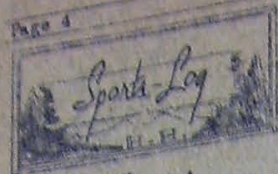
Tacoma	2	1	0	1	0	1	0	---	5
Vashon	2	1	2	3	7	2	3	--	20

Kabo and Yagawa; Kurugi and Matsumoto.

HOOD RIVER TEN BOWS TO W. R.

IN THE first softball game to be played at the Center, White River outfit humiliated Hood River by a 30 to 18 count.

George Fujimoto led the White River sluggers with a homer and 3 triples in 4 trips to the plate. Tak Kawahara with two doubles was the leading stick wielder for Hood River.



INTRODUCTION . . .

Upon arriving at this Center from Tacoma last week, Editor G. T. stopped me long enough to say that the sports desk is all dusted off and the first issue of the Logger was going to press.

Trying to think of a thing to bat out while winning my forehead every minute is quite a burden. However, with several capable recreational directors working on the project, we should have a well organized program of sports by next week.



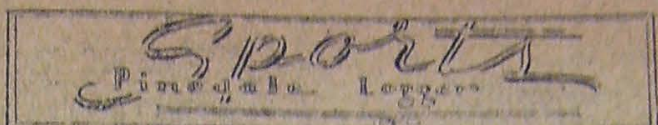
DIAMOND DUSTS . . .

At a meeting held last week an extensive recreational program was mapped out. Included in this was a softball league which will find both boys and girls participating. At the present time, James Matsuoka and Jimmy Doi are shaping the loop into form and will endeavor to hold league openers sometime next week. Marcelline Uyeji of South Park will head the girls' division.

SLIDE KELLY SLIDE . . .

Met George Hori, Chuck Matsuoka, Johnny Okimoto, Ike Fujishin, Elaine Sadedori, Mary Hori, Sako Tamasaki and the rest of the White River bunch which brought baseball and basketball memories. . . . Actually saw football being kicked around. . . . Would be grand if we can have hoop games. . . . Seigo Kuba of Tacoma looked so silly with his hands in the mud puddle after a clean miss. . . . The kitchen crew in Mess D1 will make a good basketball team the way they pass those dishes around. . . . Vashon humiliated Tacoma Tigers by a 17 to 6 score, which incidentally was a seventh inning total.

Teams to play:
SIX TEAMS
ANSWER CALL



May 30, 1942

Page 5

SIX teams answered Marcelline Uyeji's first call for teams to form the girls' softball league to play for the Center championship.

The teams listed in the loop so far are: Auburn, Tacoma, Hood River, Vashon-Kingston, Bellevue and Kent. It is expected that Sacramento will enter a team before the season gets underway.

AUBURN---June Kuramoto, Toshiko Tsuji, Daisy Norikane, Mary Terashima, Fumi Tsurui, Mae Natsuhara, Hisako Kano, Amy Koyano, Chisako Kawasaki, Alyce Yoshizumi, Amy Kawakami, Natsuyo Miyagawa, Haruyo Miyagawa, Helen Asayama, Dorothy Nishimoto, Gladys Shimasaki.

TACOMA---Toshi Nakamura, Mickey Fukui, Kinuyo Tanaka, Miyako Fukuyama, Alice Kubo, Emi Rutsuda, Kimi Kubo, Shizue Tamaki, Misao Takasugi, Betty Nakata, Aiko Kimura, May Nakao, Ietsuyo Norikawa, Sue Nakao, Mary Kanno, Riyeko Kikuchi, Mary Yagawa, Sumiye Oikawa, Michiko Jincuji.

HOOD RIVER---Chiye Sato, Mika Asai, Kazue Kiyokawa, Ruth Inukai, Shuko Kiyokawa, Nobuko Fukui, Margaret Norimatsu, Takako Kawahara, Sunne Akiyama, Hanna Kinoshita, Shizue Yasui, Naomi Hanba, Kiyo Ogawa, Ridi Ogawa, Mary Kawachi, Sumi Sakai.

VASHON-KINGSTON---Nora Hoshi, Kimi Takatsuka, Mary Nakandehi, Hide Kunugi, Michi Shintani, Dorothy Nomura.

BELLEVUE---Sadie Muramoto, Yuri Yamaguchi, Chisako Yamaguchi, Yuri Yamaguchi, May Yamaguchi, Fumi Hayashida, Nori Hayashida, Masako Yoshimoto, Masako Kitajima, Kazue Kitajima, Chiye Ito, Masayo Takehita, Masako Kanaya, Morteiko Sato, Michiko Tsushima.

KENT---Betty Yokota, Elaine Sadamori, Mary Hori, Jessie Yanigawa, Mary Yanigawa, Mitsuri Shinoyama, Louise Okimoto, Louise Hiranaka.

Yabuki Hero:

BELLEVUE WINS CLOSE ONE OVER HOOD RIVER.

PITCHER KIYOSHI Yabuki broke the tie score in the fifth inning when he spiked the home plate to give the Bellevue strawberry grower a 10 to 9 win over Hood River on Wednesday night. Yabuki not only scored the winning tally but also held the opponents to 5 scattered blows.

EX-NISSEI COACH TO HEAD RECREATION

Carl Bengston, former coach of Berkeley Nisseia of the Northern California J A U, arrived last Wednesday morning from San Luis Obispo, California to take charge of the recreational program at Pinedale.

Bengston will have James Matsuka and Marcelline Uyeji as directors of the softball division.

Ouch! Is my Back Sore!

Creaking bones and bending backs did not stop Tacoma and White River old-timers from enjoying softball game in their own back yard.

The game went a full 7-innings before White River convinced Tacoma ball chasers that they were all washed up as far as their baseball was concerned. The Valley outfit pushed over 18 runs to their opponent's 3 to walk off the diamond very happy.

Tacomans held their opponents to 9 runs in the first four innings, but ran into trouble in the fifth when bad eye-sights on the part of Tacoma outfielders, followed by a triple by Ed Natori, a single by Tony Kato and a homer by S. Nakanishi accounted for 6 additional runs.

NOTICE

LOST: A pair of horseshoes.

Recreational directors report that a pair of horseshoes has been lost and would like to have the same returned immediately. The shoes are personal property of George King.

Hood River took the lead in the third when 5 big runs were scored on doubles by Kay Kiyokawa and Tetsu Nakamura. However, Bellevue came back in the same inning to tie the count when Ted Matsushita and Kiyoshi Yabuki cleaned the bases with circuit blows.

With the score knotted at 9-all in the fifth inning, Kiyoshi Yabuki led off with a double and scored the winning run on Taro Sorakubo's two-bagger.

Toshio Shimogaki, Bellevue second sacker, had a perfect day at bat with a single and a double, while Yabuki poled out a double and a homer in three trips.

BOX SCORE

HOOD RIVER	AB	R	H
Kiyokawa, p	3	1	1
Kawahara, 2b	3	2	0
Takasumi, lf	3	1	0
Uyeno, ss	3	0	0
Nakamura, cf	2	1	1
Yasui, rf	3	0	0
Asai, cf	3	0	0
Takasumi, 3b	2	1	1
Takasumi, c	2	2	1
Yasui, 1b	2	1	1
Yoshinari	0	0	0
Takasumi	0	0	0
	26	9	5

BELLEVUE	AB	R	H
Takano, ss	3	1	0
Shimogaki, 3b	3	0	1
Kiyokawa, 1b	3	0	0
Matsushita, lf	2	2	1
Yabuki, p	3	2	2
Sorakubo, c	3	0	1
Ito, rf	2	1	1
Yabuki, cf	2	1	1
Matsuzawa, cf	2	1	1
Shimogaki, 2b	2	2	2
Muramoto	0	0	0
Takano	0	0	0
	25	10	10

Hood River 0 1 8 3 0 ---9
Bellevue 0 2 4 3 1 --10

EXTENSIVE RECREATIONAL PROGRAM PLANNED FOR BOTH YOUNG AND OLD

AN extensive recreational program for both the young and old of Pinedale was outlined last week by George H. King, Service Director, at a meeting of 20 recreational leaders.

The administration realizes that the morale of any community depends upon its recreational facilities, King told the group. Consequently, the officials are doing all they can to establish a recreational program which will provide for the enjoyment of all age groups.

Established at the gathering was the groundwork for the formation of eight soft ball leagues--four in the men's division and four in the women's. Each of the Center's five blocks will enter teams in each of the leagues. Appointed as head of the soft ball league was James Matsuoaka.

Included in the vast recreational program are: nursery schools for children, two to five years of age; kindergarten for six-year-olds; and playground activities for youngsters, seven and above.

Athletic program for the teen-age group includes: baseball, tennis, badminton, volleyball, wrestling, boxing and other sports.

Listed among social activities are: games, dances, library, regular social gatherings and amateur dramatics. Musically-inclined evacuees will find an outlet for their talents by joining orchestras, bands, piano classes and choral groups which will soon be organized. Those with artistic abilities will have an opportunity to participate in classes in sketching, painting, and cartooning.

Classes in handicrafts, needlework and toy-making will also be organized.

Barrack E-40 will soon be available as a recreation room, where ping pong and games may be played.

Issei have not been forgotten by those planning the recreational program. Jiu jitsu, kendo, sumo and shibais will be provided to delight the issei spectators. Go and shogi tournaments are also being planned.

SORRY - NO LUMBER

NO material is to be taken from any of the lumber piles without permission from Work Director.



IF you were a doctor and working under the following conditions--what would you do?

First of all, due to the terrific scarcity of doctors, we have only two at this camp--where some 5,000 needs currently reside. Their skeleton staff is composed of one registered nurse and several aides. They are without equipment due to government priorities and other factors. Then they are forced to listen sometimes 24 hours daily to minor complaints and many demands for personal attention of these troubles.

Now, Dear Public, if you had to carry these burdens on even your broad shoulders--wouldn't you in all probability be a victim of nervous prostration, with an excellent chance of landing in some insane asylum?

These are the kind of problems with which the medical staff has to contend. Inasmuch as doctors are in great demand everywhere, our doctors in the Center volunteered their services for the sake of issei and nisei humanity.

Pray then, let us not blame our hospital crew for a few inconveniences we may had to contend with. On the contrary, let us be thankful for these men and women of medicine who are doing everything possible to take care of our needs. Let us be sensible and not too exacting in our demands.

Let us show that we have faith in them and cooperate in safeguarding our--and also their--most precious assets--our mutual health.

NOW that our Center is almost wholly occupied let us make this coming week "Get Acquainted" week. Should you see a stranger coming your way, walk up to him or her and introduce yourself. Shake his or her hand, speak to your new acquaintance in a friendly and informal fashion. Before you know it you may have made a life-long friend.

UNSEASONAL WEATHER CREATES BLANKET RUSH

WEATHER somewhat unbecoming and almost unknown to this area, during this time of season, anticipated a sudden rush for wool blankets. Majority of hardy Northwesterners, usually accustomed to a crisp breeze, but who have adapted themselves of late to torrid winds, clamored for 1700 blankets since Sunday, rather than risk an epidemic of "nassy Ol' colds" and shivering timbers. Since the Center's opening to evacuees, 3820 blankets have been distributed.

Three blankets were allotted per person if considered essential. The head of family is held responsible for loss of all bedding equipment, including bed, mattress and blankets, according to Daniel C. Roberts, Director of Works Division. Some persons who have moved in with friends have taken their bedding with them. The head of the family is still responsible for the bedding which was originally in the apartment designated to the responsible party.

Excess blankets not in use must be returned. Roberts intimated that the sudden rush to return the blankets would be as great as the request for them.

BLACKOUT RULES

DURING blackouts, please proceed to your apartment in an orderly manner and stay indoors until such time as the lights are turned on again.

Do not light any matches or cigarettes or fires of any kind during the blackout.



I WONDER IF THEY HAVE A DOUBLE BED?

DIPLOMAS POSSIBLE FOR 1942 GRADUATES

△ STUDENTS who were prevented from being graduated from high school or college as result of evacuation are requested to turn in their names, addresses and names of school to George H. King, Service Director, A-4-1.

Through cooperation with the Fresno State College, arrangements are now being made to hold graduation exercises for those entitled to 1942 diplomas.

COLOR TAGS TO END MESS LINES

△ AS a result of daily incoming evacuees increasing the mess hall population and primary plans still in the process of perfection, there is confusion and long waits during meal time. These conditions will and are being eliminated with strict regulations to be observed, according to William Weller, head of Food and Lodging department.

There are ten mess halls accommodating 500 in three shifts. When Pinedale reaches its capacity of 5,000 within this month, special colored tags will be issued to each individual. Each color will designate the mess hall and will be numbered 1-2-3 to designate the mess call.

A siren will be installed and 15 minutes after the siren call, doors will be closed. Weller states that there will be no opportunity to crowd in the next shift because of tardiness. Meals will be served at the time shown on the identification sheet issued at the time of arrival into Pinedale.

LOST

△ LOST: apparently misplaced during baggage inspection, a box full of miscellaneous articles including a medical kit and ivory chopsticks belonging to Y. Nishiyori, B-3 7-1, was reported missing. Yashon and Kingston groups were requested to be on lookout for the box.

PINEDALE POPULATION INCREASED TO 4833

△ WITH the induction of 700 evacuees from Perkins, California last Thursday and Friday Pinedale's population rose from 4133 to 4833. This move marked the initial endeavor on the part of the government officials to locate Californians here officially.

Last Saturday 541 people from the Auburn area in Washington thread their way past the induction building to increase the number from 3044 to 3486. Sunday saw another influx of Auburnites totaling 548, thus bringing last week's total to 4133.

RADIO REPAIRS BY EXPERT ANNOUNCED

△ HARRY Morioka, B-20-3, former proprietor of the Mid-Columbia radio shop in The Dalles, Oregon, now employed in the Electrical department, A-1-3, announces he has equipment and facilities for all types of radio repair work, which will be guaranteed. Those with radio difficulty may leave their sets at his residence and will receive immediate attention. There will be a nominal fee.

TRANSFER REQUESTS TO GO THRU HAUCK

△ EVACUEES desirous of transfers between assembly centers are to make such requests through the Center's manager, Fred Hauck, instead of writing San Francisco. Only transfers to bring immediate families together will be considered on such requests, providing the families were living together prior to induction.

Other requests for leaves and relocations must also be made in talking to Hauck.

FOUND...ODD ENDS

△ AN overcoat, jar of pickles, woolen socks, these are few of the 40 odd articles which have been turned into the Lost and Found department in the office of the Interior Police, A-2-5. Claimants to lost articles are asked to identify their possessions, and likewise, articles found are to be turned in there.

LABOR BOARD FORMED TO AID ALL WORKERS

TO insure fair representation in employment to all groups in Pinedale, a new six-man board, the Pinedale Labor Adjustment Board, was created this week.

It is the hope of the group that this new board will eliminate factions and politics and bring different groups together.

"We have jobs to do and we want the most qualified person for the job regardless of where they came from. We're not interested in personality as such," Dan Harrington, Section Officer, stated at the meeting.

The purpose of the board, of which Mun Iseri is chairman, is as follows:

1. To promote community unity from the standpoint of employment.
2. To place the most qualified person regardless of region.
3. To make recommendations to the department heads.
4. To make the community as harmonious as possible.
5. To receive complaint regarding jobs and remedy them.
6. The board will function as an advisory group.

All applications will pass through the regular employment office and then reviewed by the Board. The Board will in turn make recommendations to the various department heads.

Members of the Boards are: Mun Iseri, Kaz Yano, George Tamara, Dan Sakahara, Autsuo Hashiuchi, and Satera Nakanishi.



LABOR STATISTICS SHOW MESS CREW HOLDS MAJORITY; OFFICE WORKERS NEXT

APPROVING that the daily three meals are paramount in any community, statistics released today by Harry Hamada of the Employment division show that 433 persons comprise the Mess hall crew of the Center.

Out of 975 employees, Mess hall workers maintain the majority, and office workers appear next with 114 members on the payroll.

In the professional field, two physicians and three dentists are listed. 69 persons in various other occupations are recorded; 338 are skilled laborers and 486 are classified in the unskilled division.

According to the Employment bureau, jobs are still open for laborers and mess workers on the swing shift. Positions for those in the skilled bracket will be

considered if those qualified will present their qualifications to the district member of the Board of Occupational Interviewers in the Employment office.

MUSICIANS WANTED

ANYONE having musical instruments and desiring to join the Center orchestra is requested to report to George R. King, Information Office.

WASHDAY PROBLEMS BEING SOLVED BY MAN

"MORE men should do their washing," says Tan-yoshi Korekiva, a evacuee from Auburn, Washington, "and save women sometime." This being his first washing, ambitious Korekiva wasn't wasting any time keeping up with the rest of the ladies.

On the other hand, ladies busy with their tubs full of clothes, complained because too many women are crowding the wash

rooms.

"To solve this problem of overcrowding, wash days should be every day at certain hours, preferably morning to first dinner bell," Audrey O'Konogi, wife of Dr. Hugh O'Konogi, stated. "Families especially with large number of children prefer washing every day to keep their children clean in spite of the dust. This will also save oil and water in the

same manner as having wash day Monday, Wednesday and Saturday."

Another need for improvement in the wash room is that of drainage. Daniel C. Roberts, Director of Works Division has already contracted digger outfit to dig new cess pools and wells.

"Drainage is being taken care of as rapidly as possible," the Work Director emphasized today.